

NICE Actimize

Brochure

Agentic AI for Financial Crime Investigations

InvestigateAI



Scaling Investigative Capacity

Financial institutions are under constant pressure to process more investigations while maintaining rigorous oversight. Alert volumes continue to grow across AML and fraud programs. At the same time, investigation workflows often span multiple solutions and manual enrichment steps. This fragmentation slows investigations and increases review overhead.

Financial institutions need a way to **scale investigative capacity without increasing cost or operational risk**.

Bring Agentic AI to Every Investigation

InvestigateAI embeds agentic AI directly within ActOne investigation workflows, organizing and enriching alert and investigation information to surface the most relevant context. This eliminates the need for manual data gathering and delivers insights and recommended next steps aligned with institutional policies and procedures. Unlike traditional automation tools that focus primarily on managing workflows, InvestigateAI also supports the analytical work investigators perform. This helps analysts move through investigations more efficiently while maintaining consistent handling aligned with institutional policies.



Improve Investigator Efficiency

InvestigateAI reduces the time analysts spend gathering information and organizing relevant context.



Expand Investigative Capacity

InvestigateAI allows teams to complete more investigations without proportional headcount growth.



Align Investigations with Institutional Policies

InvestigateAI structures investigation steps, helping analysts stay aligned with institutional policies and procedures.

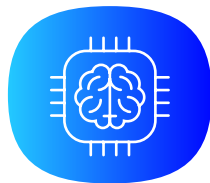


How InvestigateAI Enhances the Investigation Workflow



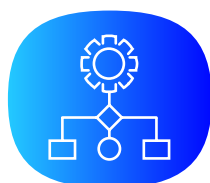
Get the Full Context Instantly

InvestigateAI brings together alerts, enrichment information and related activity within the workflow, giving analysts a consolidated view of the most relevant information. Key entities, transactions and relationships are presented in one place, reducing time spent on manual research and eliminating the need to navigate across multiple systems



Identify What Matters in the Investigation

InvestigateAI analyzes alert, enrichment and investigation information to summarize key findings and highlight what matters most for the investigation. This includes surfacing historical activity associated with the alert, such as related alerts and prior investigations, helping analysts assess recommended next steps.



Guide Consistent, Policy-Aligned Decisions

InvestigateAI structures recommended next steps based on enriched alert context, relevant insights and institutional policies associated with the alert type. These recommendations are presented within the workflow, supporting consistent approaches while analysts review and refine before finalizing outcomes.

Purpose-Built Agentic AI for Financial Crime Investigations

InvestigateAI is designed specifically for financial institutions and the operational realities of AML and fraud investigations. Rather than operating as a standalone AI tool, it is embedded directly into ActOne workflows and operates on the same alerts and information used by analysts within the platform. InvestigateAI supports investigations across AML and fraud workflows, working with alerts, activity and related information from internal systems as well as external enrichment sources. The solution is designed for production environments where investigations must be consistent, transparent and aligned with institutional policies and regulatory audit requirements. Analysts remain responsible for reviewing findings, completing investigations and making final decisions.

Expand Investigative Capacity with Control and Confidence

As investigation volumes continue to grow, financial institutions need ways to expand investigative capacity while maintaining strong operational control. InvestigateAI embeds AI directly into the ActOne investigation workflow, helping analysts by automatically gathering and enriching the most relevant information, eliminating manual data collection and surfacing meaningful contextual insights. Built specifically for financial crime operations, InvestigateAI helps organizations leverage AI capabilities while maintaining the oversight, consistency and transparency required in regulated environments.

Learn how ActOne InvestigateAI can support your investigation teams.

→ Request a demo

NICE Actimize



Know more. Risk less.

info@niceactimize.com

niceactimize.com/blog

[@NICE_actimize](https://twitter.com/NICE_actimize)

[/company/actimize](https://www.linkedin.com/company/actimize)

[NICEactimize](https://www.facebook.com/NICEactimize)

About NICE Actimize

As a global leader in artificial intelligence, platform services, and cloud solutions, NICE Actimize excels in preventing fraud, detecting financial crime, and supporting regulatory compliance. Over 1,000 organizations across more than 70 countries trust NICE Actimize to protect their institutions and safeguard assets throughout the entire customer lifecycle. With NICE Actimize, customers gain deeper insights and mitigate risks. Learn more at www.niceactimize.com